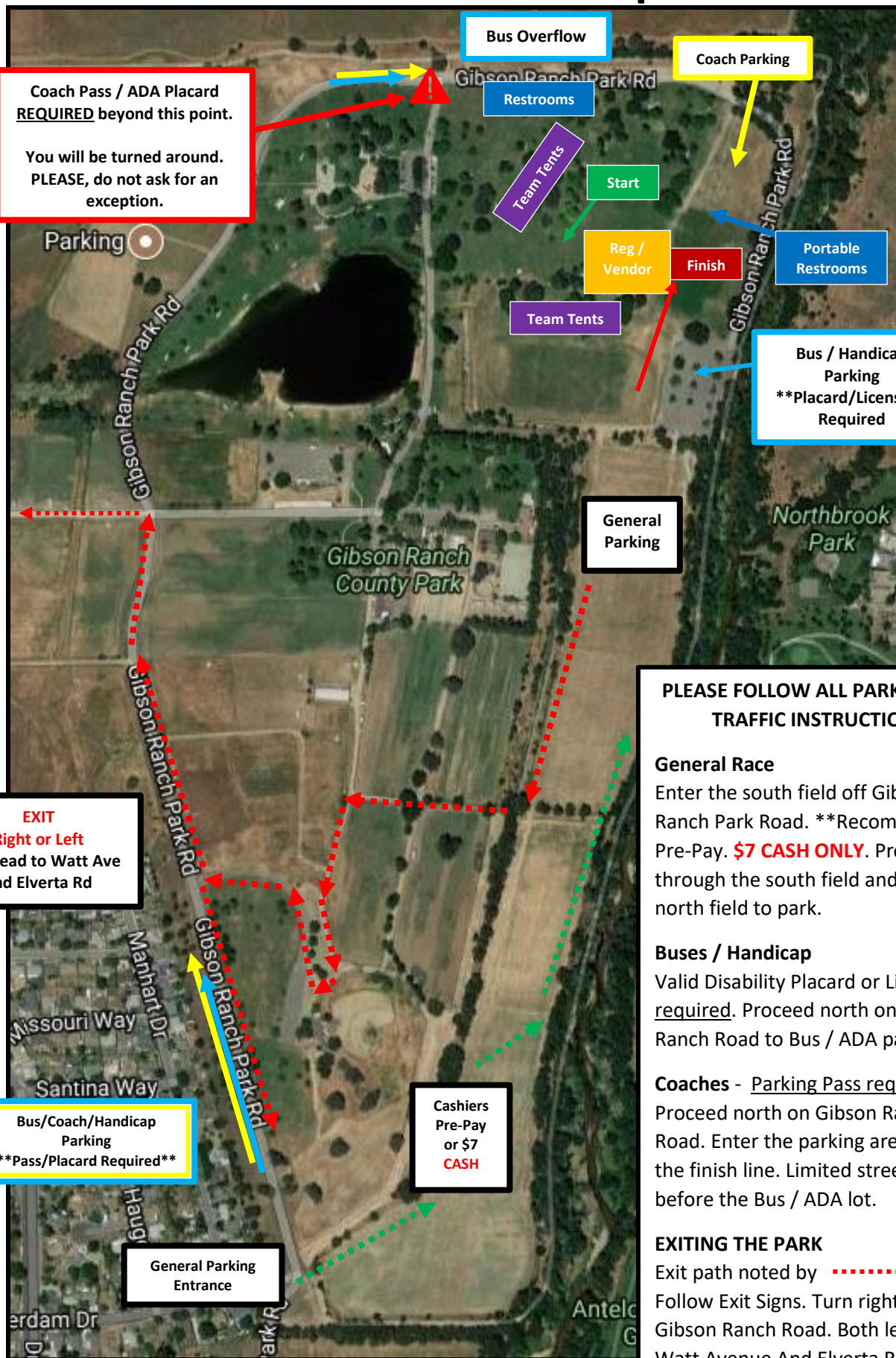


Flat SAC Event Map



Coach Pass / ADA Placard **REQUIRED** beyond this point.
 You will be turned around. PLEASE, do not ask for an exception.

Bus / Handicap Parking
****Placard/License** Required**

EXIT
 Right or Left
 Both lead to Watt Ave and Elverta Rd

Bus/Coach/Handicap Parking
****Pass/Placard Required****

Cashiers
 Pre-Pay or \$7 **CASH**

PLEASE FOLLOW ALL PARKING AND TRAFFIC INSTRUCTIONS.

General Race
 Enter the south field off Gibson Ranch Park Road. ****Recommend Pre-Pay. \$7 CASH ONLY.** Proceed through the south field and into the north field to park.

Buses / Handicap
 Valid Disability Placard or License required. Proceed north on Gibson Ranch Road to Bus / ADA parking lot.

Coaches - Parking Pass required
 Proceed north on Gibson Ranch Road. Enter the parking area north of the finish line. Limited street parking before the Bus / ADA lot.

EXITING THE PARK
 Exit path noted by **.....➔**
 Follow Exit Signs. Turn right or left on Gibson Ranch Road. Both lead to Watt Avenue And Elverta Road.